

# Finger Print Identification System

Aloha Table Service® / Aloha Quick Service®

Installation Guide  
**Software Version 2.0 or higher**

**November 3rd, 2005**

For use with the Digital Persona URU 4000 or URU4000B  
FingerPrint Sensor.



**Copyright 2003-2004, Lone Tree Technology, Inc.**

[www.LoneTreeTechnology.com](http://www.LoneTreeTechnology.com)  
[info@LoneTreeTechnology.com](mailto:info@LoneTreeTechnology.com)

**This document describes how to install the Finger Print Identification System with Aloha Table Service / Aloha Quick Service.**

**After completing the installation, refer to the User's Guide for information on software configuration and usage.**

Aloha Quick Service and Aloha Table Service are registered trademarks of Radiant Systems, Inc.

<b>1</b>	<b>GENERAL INSTALL INFO .....</b>	<b>3</b>
1.1	WHAT DO I NEED TO INSTALL AND WHERE? .....	3
1.2	IS THE ORDER OF INSTALL IMPORTANT? .....	3
1.3	AN NOTE ABOUT ALOHA ENVIRONMENT VARIABLES.....	3
<b>2</b>	<b>INSTALLING THE FINGER PRINT REGISTRY (BOH) SOFTWARE / HARDWARE.....</b>	<b>5</b>
<b>3</b>	<b>INSTALLING THE FPID.LIC LICENSE FILE ON THE BOH SERVER. ....</b>	<b>9</b>
<b>4</b>	<b>INSTALLING THE FINGER PRINT ID FOR FOH SOFTWARE / HARDWARE .....</b>	<b>10</b>
<b>5</b>	<b>TECHNICAL SUPPORT INFORMATION .....</b>	<b>14</b>
5.1	FINGER PRINT ID COMMAND LINE SWITCHES .....	14
5.2	ENVIRONMENT VARIABLES .....	16
5.3	MISCELLANEOUS INFORMATION.....	16

## **1 General Install Info**

### **1.1 What do I need to install and where?**

You will need to install the following components:

- 1) Finger Print Registry for Aloha (BOH) software on the Aloha Back of House Server
- 2) Finger Print ID for FOH software on each Aloha Front of House Terminal
- 3) Install the Hardware License file, FPID.LIC, in the ALOHA(QS)FPID directory on the Back of House Server.
- 4) Digital Persona URU 4000 Fingerprint Sensors on each Front of House (FOH) Terminal AND the Aloha Back of House Server (BOH).

### **1.2 Is the Order of Install Important?**

**Yes!**

- Always install the software for the Back of House (BOH) server first, then the Front of House (FOH) terminal software.
- Install the FPID.LIC file into ALOHA(QS)\FPID directory on the BOH Server prior to running the installed software the first time.
- Always install the Finger Print Sensor hardware AFTER installing the Software.
- You may install the hardware on each machine after the software install is completed for that machine.

### **1.3 An Note about Aloha Environment Variables**

The Finger Print ID for Aloha software requires the following Aloha Environment variables to be properly set for installation and operation:

- IBERROOT (Front of House only)
- SERVER (Front of House only)
- LOCALDIR (Front of House only)
- IBERDIR (Back of House only)

The installation programs will automatically search the environment for these variables; if they are not found, the installation program will search the IBERCFG.BAT file in the following directories:

C:\  
C:\ALOHA  
C:\ALOHAQS.

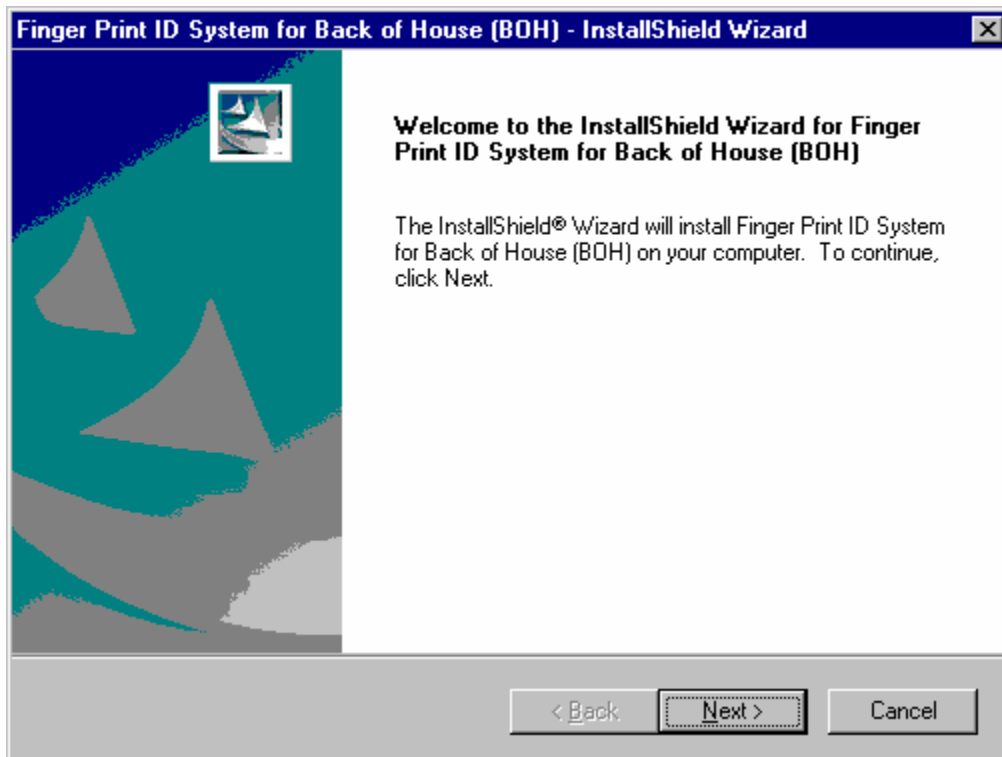
If the installation program cannot find the file IBERCFG.BAT, the user will be prompted during the installation for the appropriate values of these variables.

## 2 Installing the Finger Print Registry (BOH) software / hardware

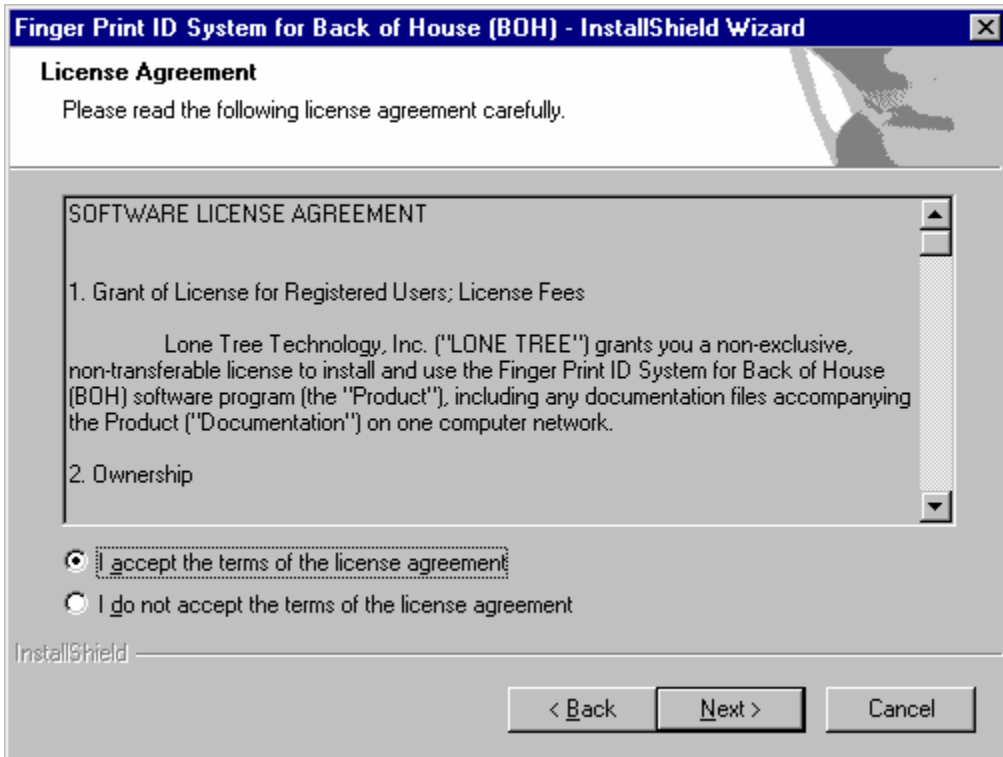
**Important: Install this software ONLY on the Aloha BOH Server!**

### Install steps:

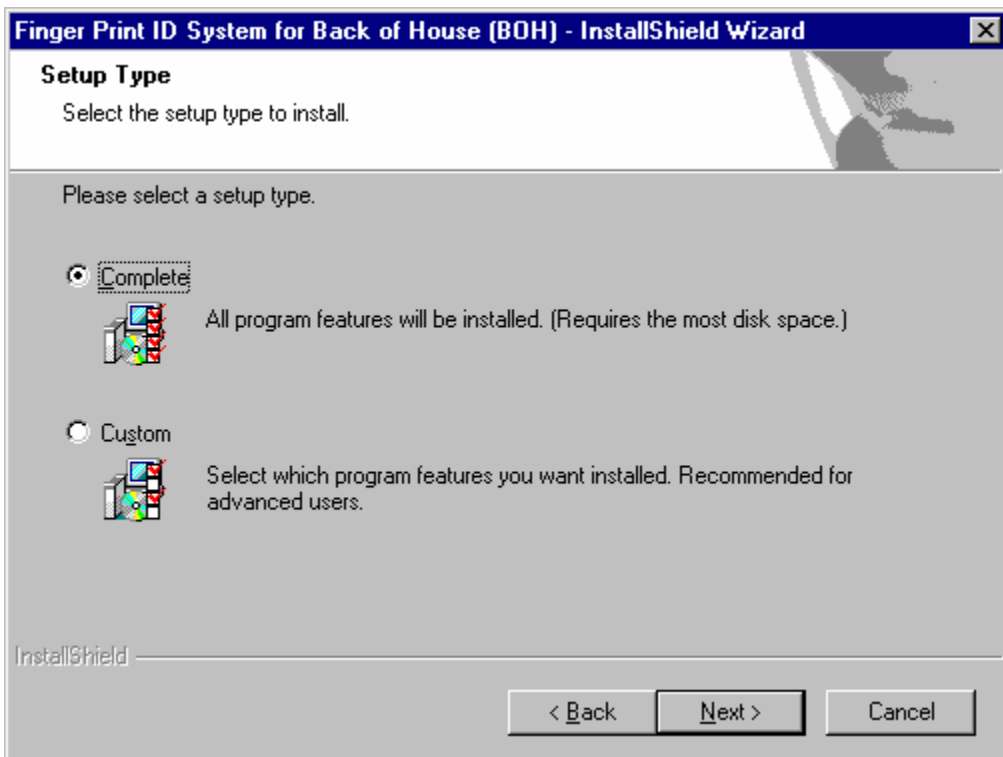
1) Locate the file: "Install FP ID Registry BOH.exe" and start this from your Back of House Server Machine. After several seconds, the following window will be displayed:



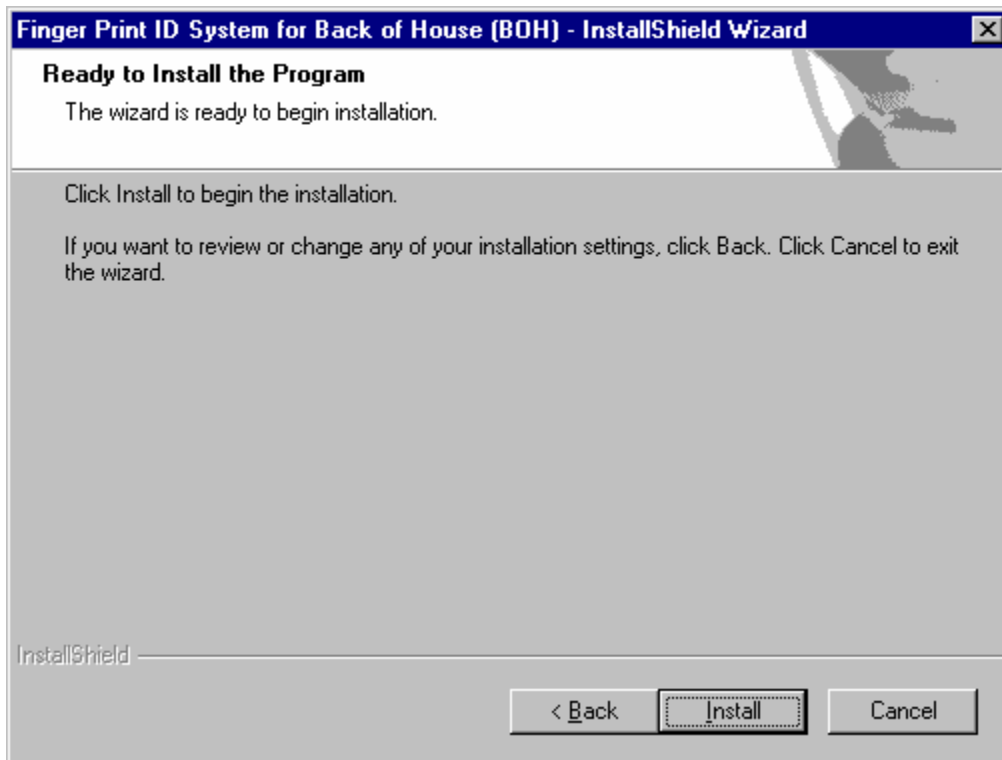
2) Click on the NEXT button to continue with the Installation. The following window is displayed:



3) To accept the license agreement, click on "I accept the terms of the license agreement" and click on the NEXT button to continue with the Installation. The following window is displayed:

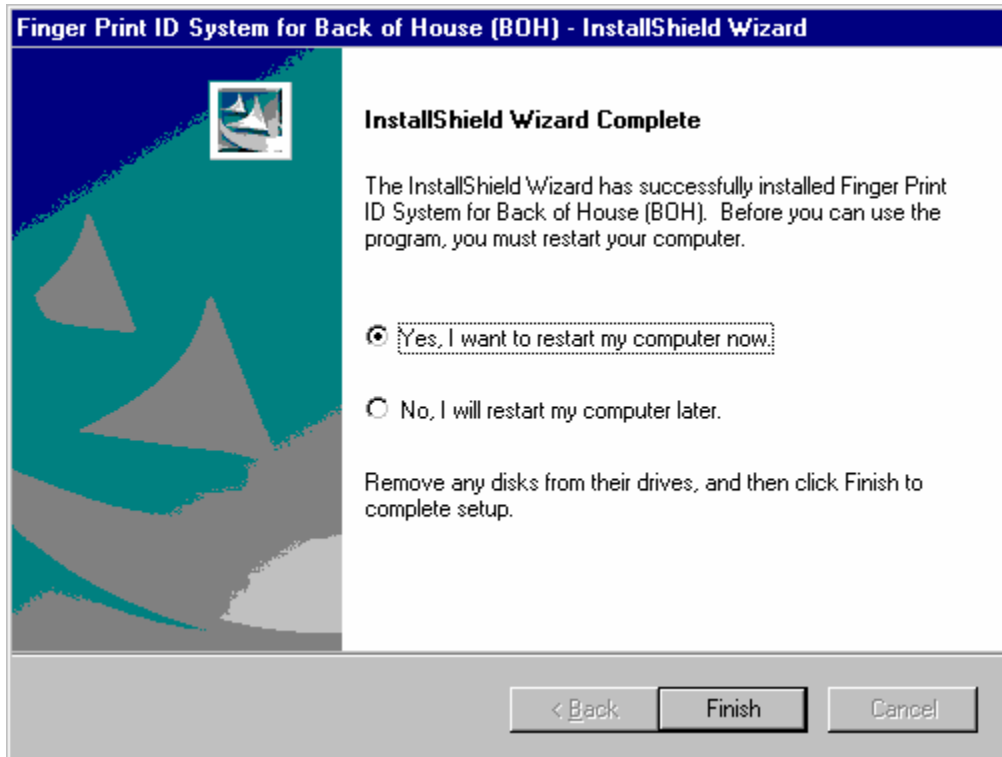


4) Select "Complete" and click on the NEXT button to continue with the Installation. The following window is displayed:



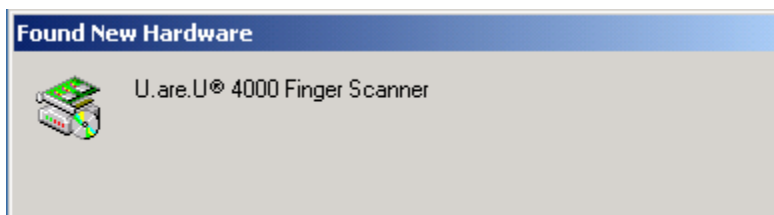
5) To finish the Installation, click on Install. The installation may take several minutes.

**NOTE: The installation IS NOT complete until the following window is displayed:**



6) Click on the Finish button and reboot the system.

7) Install the Digital Persona URU 4000 Finger Print Sensor on any available USB port on the Aloha Back of House Machine. The following window will be displayed:



**Note: If you DO NOT see the above window, your USB software / USB hardware may not be working or correctly configured.**

**Note: If the operating system asks you to manually install the software for this device (Add New Hardware Wizard), then you will need to reboot the system before attempting to install the hardware.**

### **3 Installing the FPID.LIC license file on the BOH Server.**

The FPID.LIC file is typically located on a separate CD or disk marked "Lone Tree Finger Print Sensor Hardware License List".

Copy the file to the ALOHA(QS)\FPID directory on the Back of House (BOH) server.

Note: Always use the latest available version of this file. If you have questions, you can open the file in NotePad. The first line has the creation date.

NOTE: Failure to install the FPID.LIC file in the ALOHA(QS)\FPID directory on the BOH server will prevent the installed Front of House software from completing it's initialization!

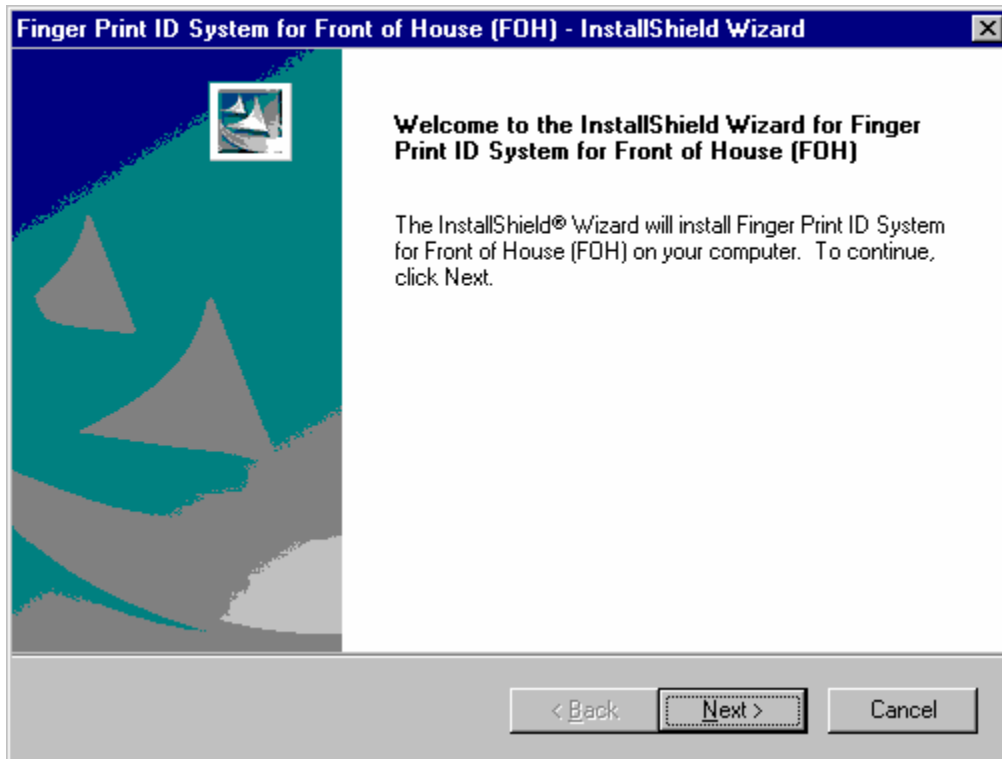
## 4 Installing the Finger Print ID for FOH software / hardware

**Important: DO NOT use this procedure when installing on RADIANT TERMINALS! Please refer to the document "Radiant FOH FPID Install Procedures".**

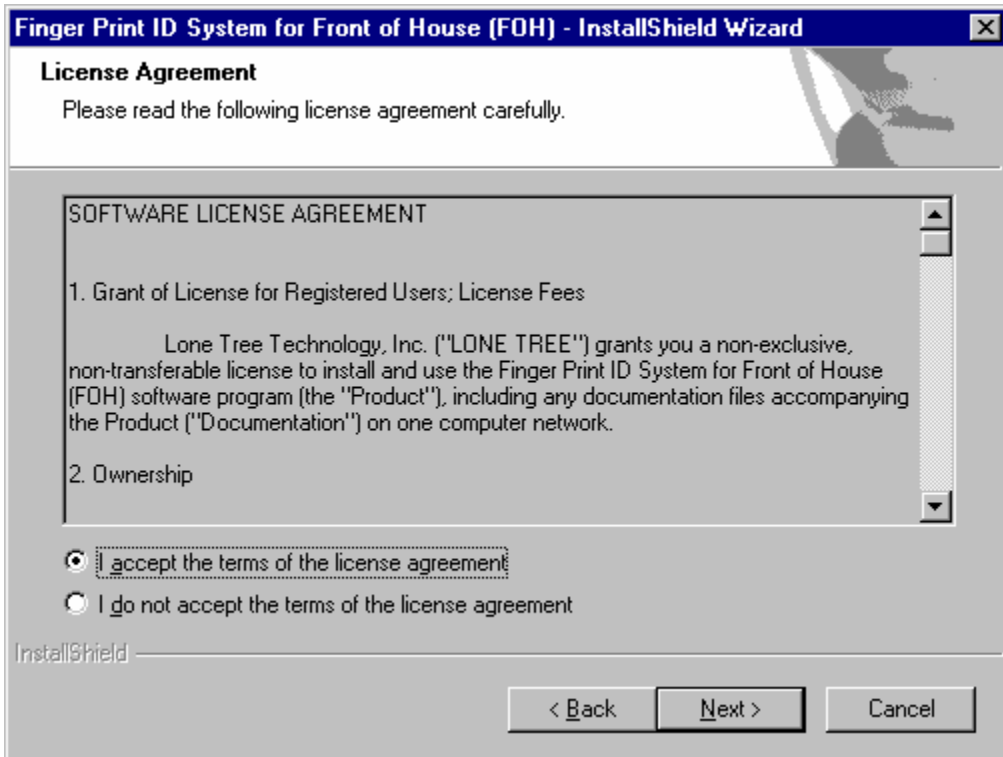
**Important: Install this software ONLY on the Aloha Front of House (FOH) Terminals!**

### Install steps:

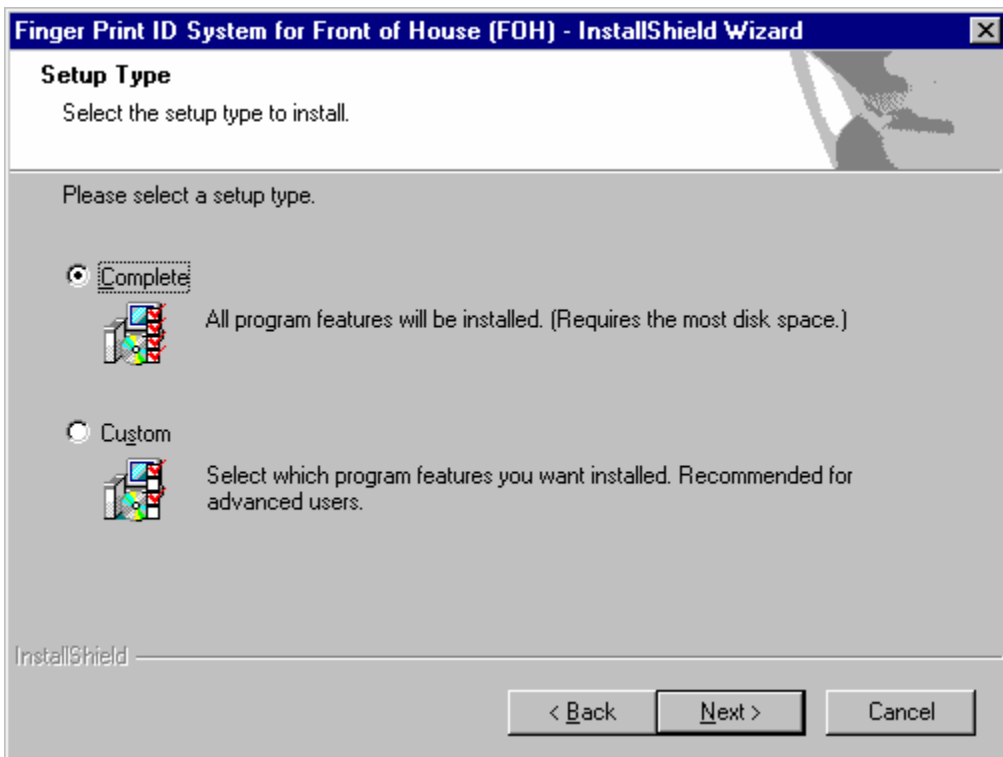
1) Locate the file: "FOHFPIDInstall.exe" and start this from an Aloha Front of House (FOH) Terminal. After several seconds, the following window will be displayed:



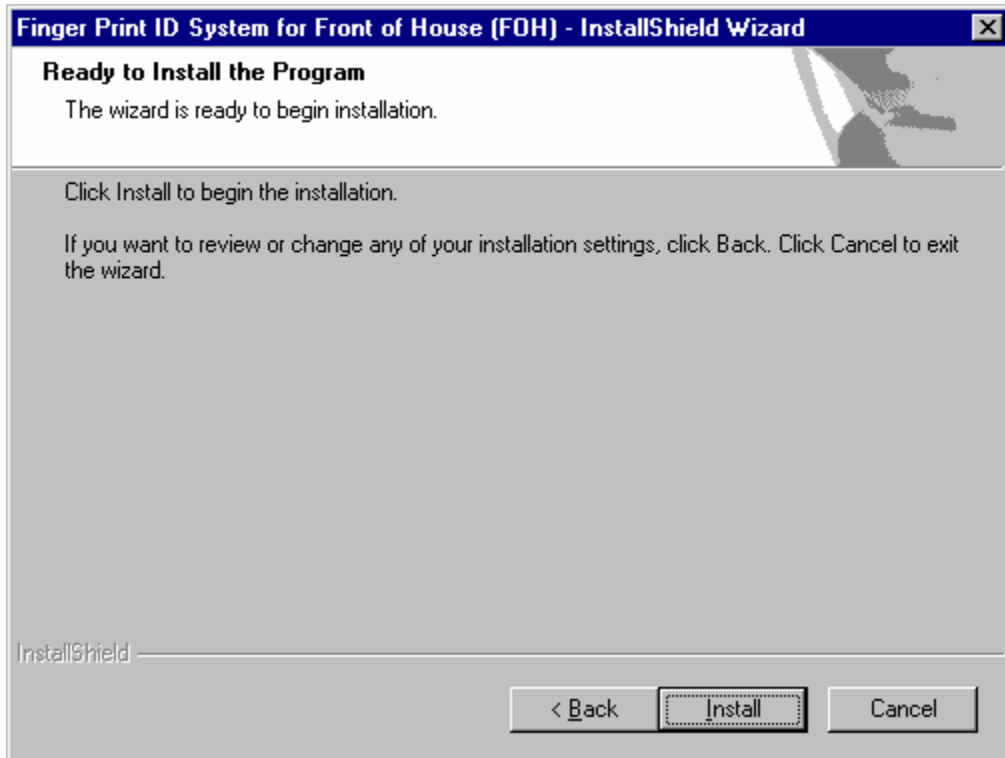
2) Click on the NEXT button to continue with the Installation. The following window is displayed:



3) To accept the license agreement, click on "I accept the terms of the license agreement" and click on the NEXT button to continue with the Installation. The following window is displayed:

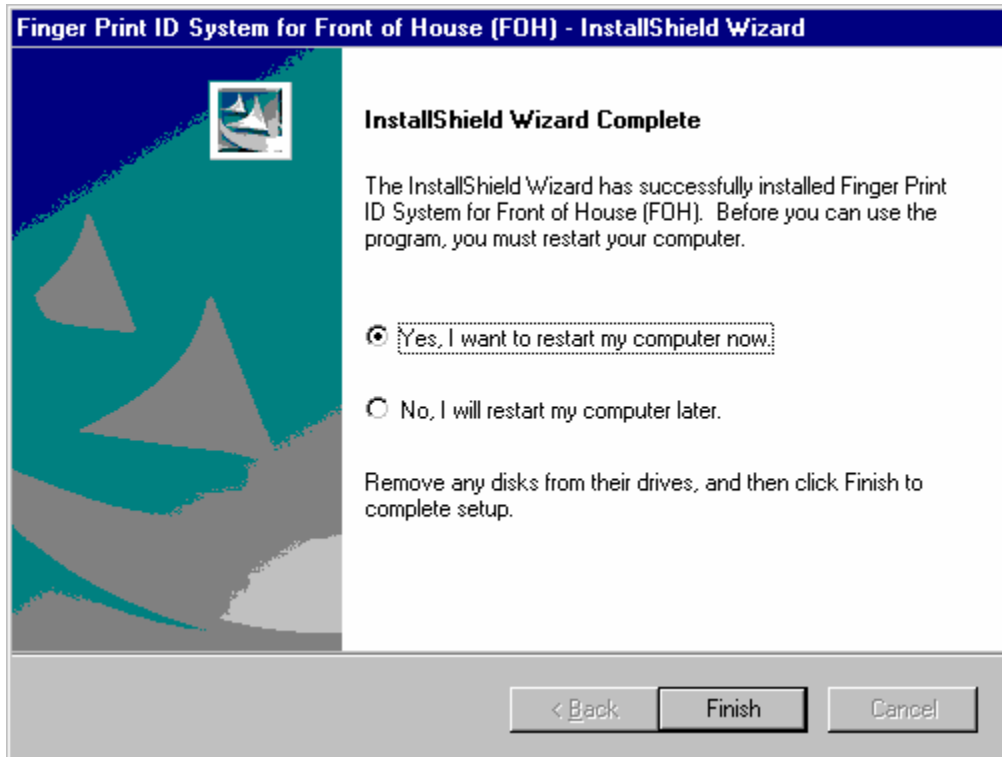


4) Select "Complete" and click on the NEXT button to continue with the Installation. The following window is displayed:



5) To finish the Installation, click on Install. The installation may take several minutes.

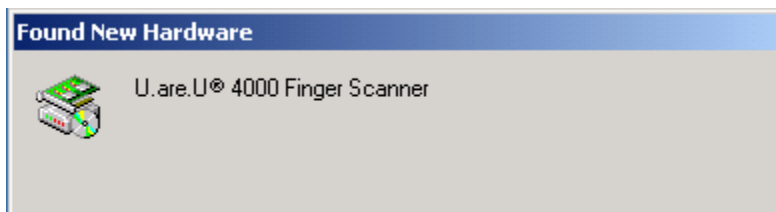
**NOTE: The installation IS NOT complete until the following window is displayed:**



6) Click on the Finish button. The computer will reboot.

**Note: It may be necessary to reboot at this time (required for Windows 98).**

7) Install the Digital Persona URU 4000 Finger Print Sensor on any available USB port on the Aloha Front of House Terminal. The following window will be displayed:



**Note: It may take 60 to 90 seconds for this window to appear on some systems (Radiant).**

**If you DO NOT see the above window, your USB software / USB hardware may not be working or correctly configured.**

Note: On some systems, a window titled "FILES NEEDED" may appear. The window will ask for the path to the file "USBDFP.SYS". This file is located in the WINDOWS\DPDRV directory. Browse to this directory; the file will be located there. Select the file and choose ok or open, the installation will continue.

**Note: If the operating system asks you to manually install the software for this device (Add New Hardware Wizard), then you will need to reboot the system before attempting to install the hardware.**

## 5 Technical Support information

The following information is provided for information purposes only and does not require the installer to perform any action unless specified by technical support.

### 5.1 Finger Print Id Command Line Switches

The Finger Print ID system executable, FPID.exe, provides a number of command line switches as described below:

<b>-DS</b>	<u>D</u> isable <u>S</u> end	Disables the sending of an employee id to the Aloha application with value of zero (0) after unsuccessful finger print identification attempts. Specifying this flag will only send valid, matched employee ids.
<b>-R</b>	<u>R</u> egistration mode	Enables finger print registration user interface and behavior. Uses registration file located on the same machine.
<b>-RR</b>	<u>R</u> emote <u>R</u> egistration mode	Enables finger print registration user interface and behavior. Uses registration file located on the server machine.
<b>-UI = &lt;min&gt;</b>	<u>U</u> ppdate <u>I</u> nterval	Sets the time interval in minutes the application waits before checking for changes to the registry or employee data file.

Valid range <min> = 0 .. 600 minutes



**NOTE:** *DEBUG and TRACE should not be used by the end user unless instructed by technical support to assist with troubleshooting.*

## 5.2 Environment Variables

The following environment variables are used:

IBERROOT – Standard Aloha Usage

IBERDIR - Standard Aloha Usage

LOCALDIR- Standard Aloha Usage

SERVER- Standard Aloha Usage

FPIDTARGET – If **Aloha Table Service** or **Aloha Quick Service** cannot be found, then use the value of this environment allows a different target application to be used. This can be used for foreign language versions of Aloha Quick Service / Table Service.

- Example: For French version of Aloha Table service, set the FPIDTARGET on the Aloha Back of House Server as follows:

**FPIDTARGET=Lire Carte Magnétique**

## 5.3 Miscellaneous Information

### 5.3.1 File Locations

The installation program creates a directory called FPID that is a child of the ALOHA(QS) directory. All program files are stored in this directory for both FOH and BOH.

The file FPID\_REG.XML in the FPID directory is the fingerprint registry file.

### 5.3.2 File Paths and Environment Variables

If the environment variables (denoted by %...%) are not found, the application reverts to relative path names : ..\xxx where xxx is fpid, newdata, or tmp depending of file.

### **Registration Mode:**

Registry file : fpid\_reg.xml

Local path = %IBERDIR%\fpid

Remote path = %SERVER%\bootdrv\%IBERROOT%\fpid

Employee data file: emp.dbf

Local path = %IBERDIR%\newdata

Remote path = %SERVER%\bootdrv\%IBERROOT%\newdata

Log file: fpid.log

Local path = %IBERDIR%\tmp or %LOCALDIR%\tmp

### **Identification Mode**

Registry file : fpid\_wrk.xml (this file is a copy of the remote registry file)

Local path = %LOCALDIR%\fpid

Log file: fpid.log

Local path = %LOCALDIR%\tmp