



Special FOH Installation Instructions

for

Radiant 1210/1510/1550 Terminals

for the

Finger Print ID System for Aloha Table Service® / Aloha Quick Service®

November 16th, 2005

Copyright 2005, Lone Tree Technology, Inc.

www.LoneTreeTechnology.com

Info@LoneTreeTechnology.com

Aloha Quick Service and Aloha Table Service are registered trademarks of Radiant Systems, Inc.

Installing the Finger Print ID system for Aloha on a Radiant Terminal requires 4 steps:

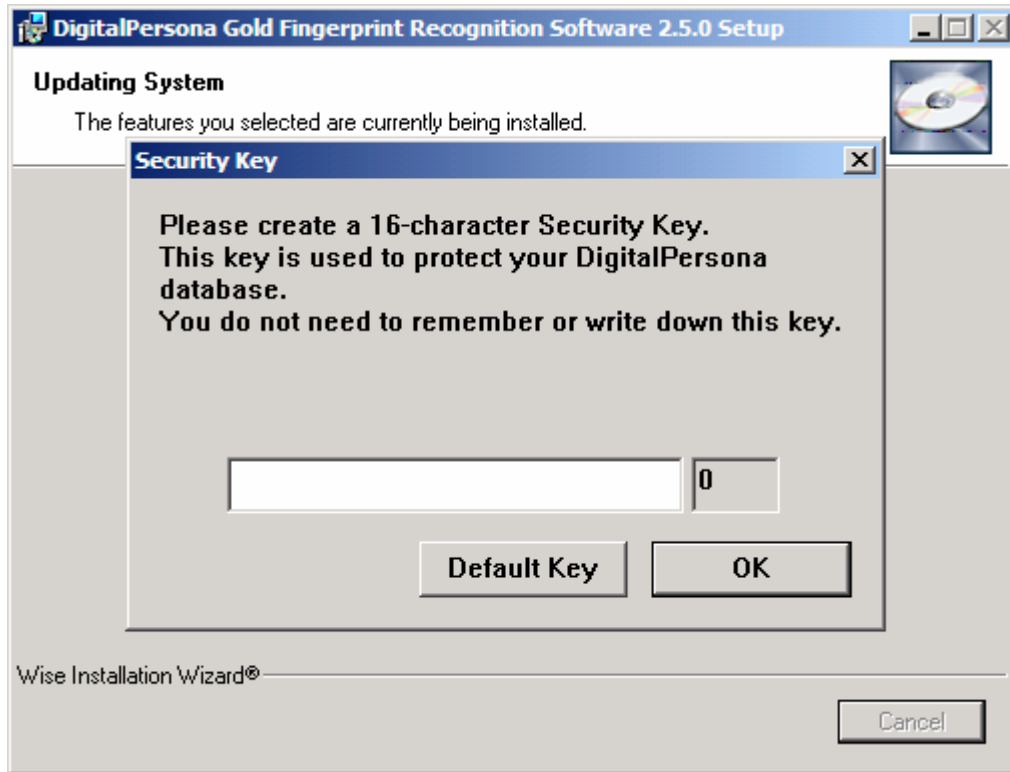
1) Install the Digital Persona Gold 2.5.0 Driver

On the Finger Print ID System for Aloha Installation CD Version 2.0.2:

- a) Locate the **DRIVERS** directory;
- b) Run the **SETUP.EXE** Program. After 20-30 seconds, the following screen is displayed:



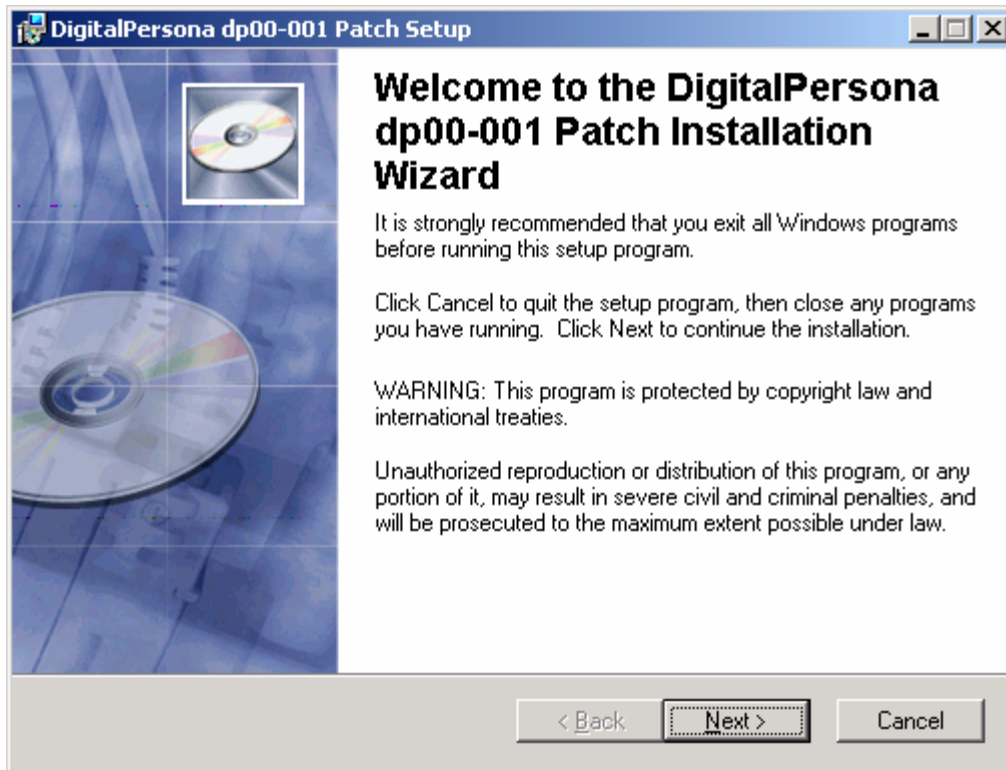
- c) Click on the NEXT button, and accept the license agreement, and follow the prompts until the UPDATING SYSTEM Window is displayed. This step may take several minutes.
- d) The Security Key window is displayed (see below). Click on DEFAULT KEY.



- e) Click on the FINISH button when prompted.
- f) Reboot the Terminal

2) Install the Digital Persona Patch

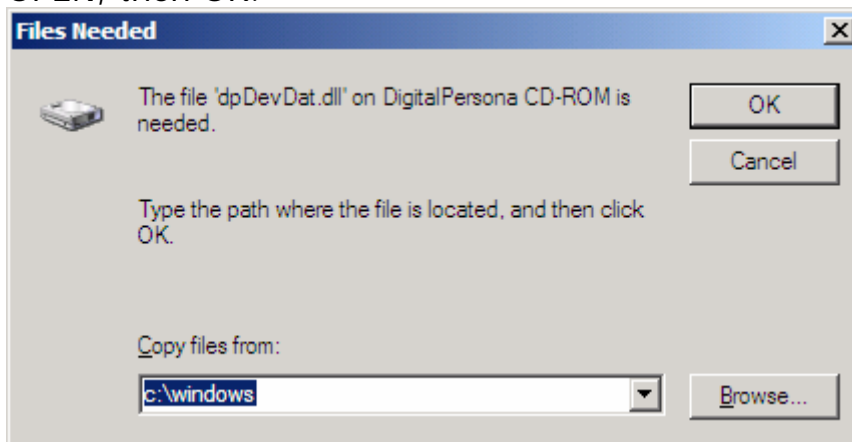
- a) Locate the **DRIVERS** directory;
- b) Run the **DP00-001.EXE** Program. After 20-30 seconds, the following screen is displayed:



- c) Click on the NEXT button and follow the prompts.
- d) Reboot the Terminal

3) Install the URU4000/URU4000B Sensor

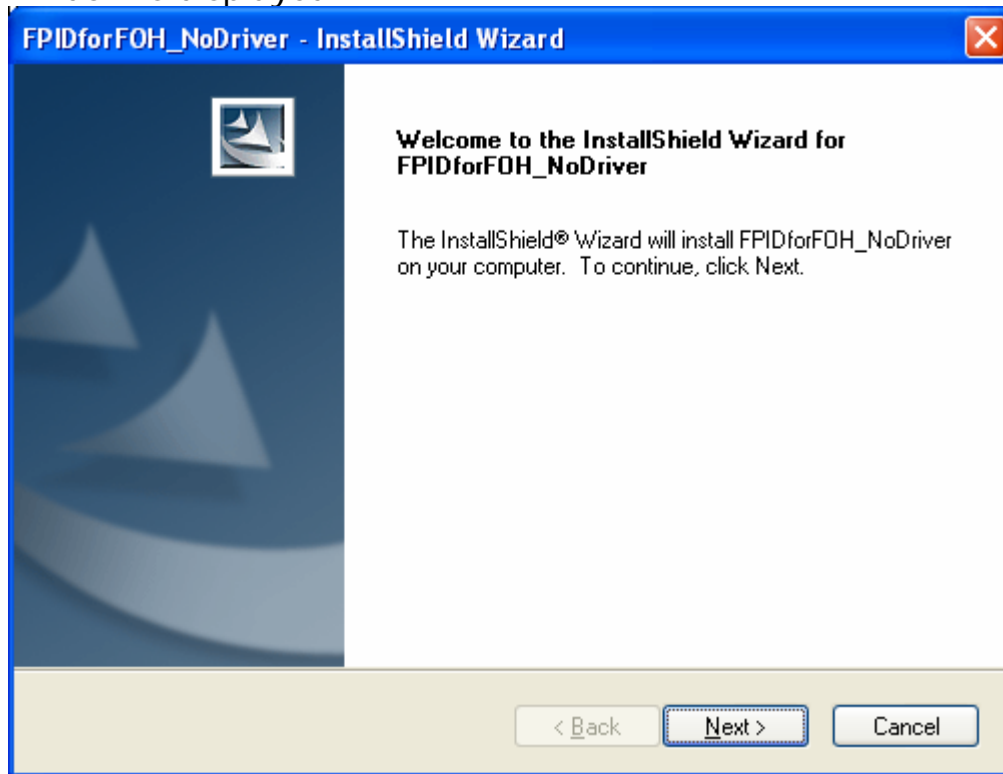
- a) After rebooting is completed, plug in the URU4000 / URU4000B reader into an available USB Port.
- b) The "Files Needed" Window (See below) MAY be displayed. If this is displayed, click on the BROWSE button and select the DPDRV directory (under the WINDOWS directory), then click OPEN, then OK.



4) Install the Finger Print ID for Aloha Application

On the Finger Print ID System for Aloha Installation CD Version 2.0.2:

- a) Run the program **FPIDFOHINSTALLLITE.EXE**. The following window is displayed:



- b) Click on the NEXT button. Review the terms of the License Agreement, and click on ACCEPT, then NEXT to continue.
- c) Select the COMPLETE setup type and click on NEXT to continue.
- d) Click on INSTALL to complete the installation.
- e) Reboot the Terminal upon completion.