

# Rental System for Aloha®

## Front of House Terminal Setup

Copyright 2002-2006, Lone Tree Technology, Inc.

Website: [www.LoneTreeTechnology.com](http://www.LoneTreeTechnology.com)

Email: [Info@LoneTreeTechnology.com](mailto:Info@LoneTreeTechnology.com)

Aloha, Table Service, and Quick Service are registered trademarks of Radiant Systems, Inc.

*Version 1.8 March 17th, 2006*

This document explains how to setup the Rental System for Aloha on Aloha POS Touch Screen Terminals running either Table Service (**5.2.7** or higher) or Quick Service (**5.2.7 or higher**).

# 1 FOH Terminal Setup

## ***1.1 Run the Rental System for Aloha Client Setup program***

The Rental System is designed to run as a client server system, with client components running on each aloha terminal, and the server component running a separate system, typically the back of house server.

On the CD, locate and run the program: **Rental System For Aloha Client.exe**.

Follow the prompts, selecting the default settings.

The installation program will take several minutes to complete the installation process.

**Note:** The installation program will start 2 MS-DOS command boxes to perform certain processes.

- Depending on the operating system, these boxes may remain open after these processes complete.
- Allow these processes to complete. On some operating systems, the boxes will close automatically upon completion.
- If the boxes remain open, you can tell when they have completed when you see the word "Finished" next to the MS-DOS icon.

## ***1.2 Configure TSAM and Light Control to point to server***

In this step the Windows Tool DCOM Config is used to set the DCOM Configuration for the Ticket System Activity Manager (TSAM) and Pool Table Light Control (if purchased).

**NOTE: FOR All-In-One systems, DCOM Configuration Step are not necessary. Proceed to the next installation step (1.4).**

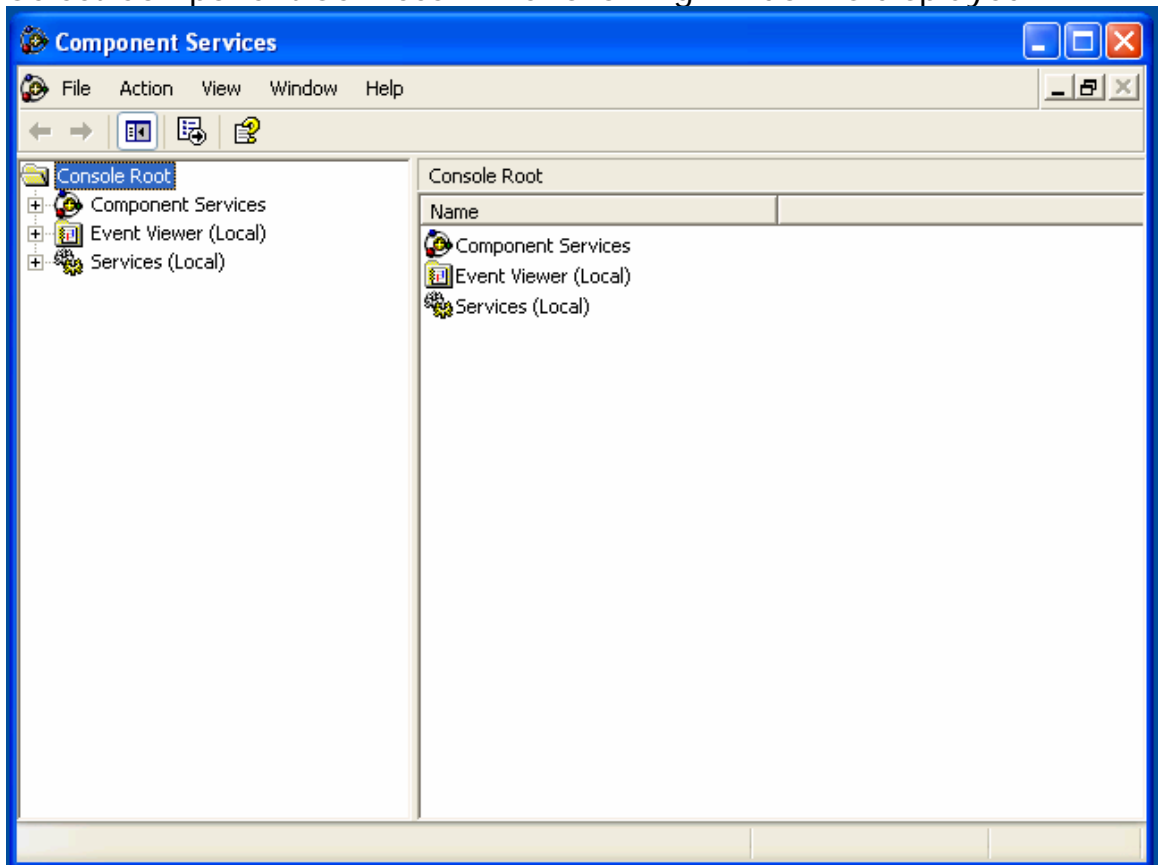
**Starting DCOM from Windows 98/2000:**

From START, select RUN then enter **DCOMCNFG** and select OK.

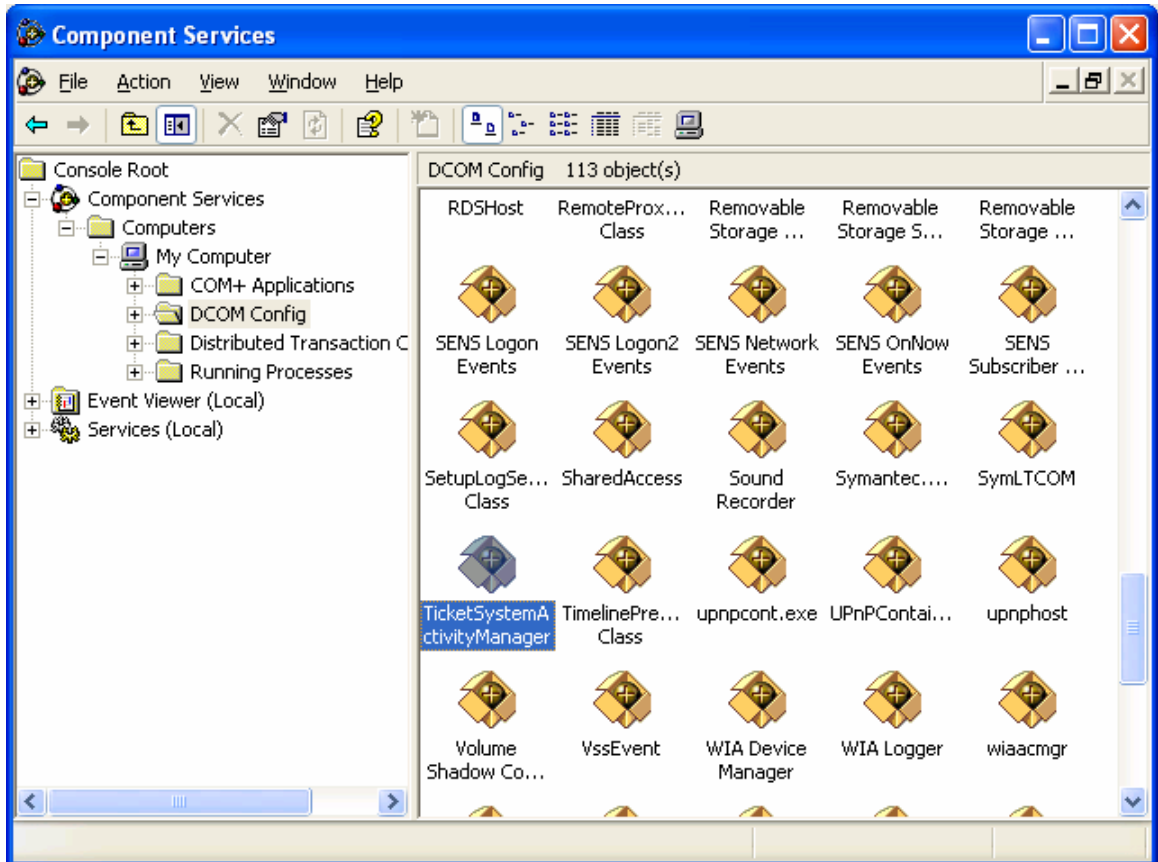
- Select the APPLICATIONS Tab.
- Locate the "**TicketSystemActivityManager**" line and double click it.
- Proceed to the DCOM Configuration Step (below).

### Starting DCOM Windows XP:

- Open the Control Panel;
- Select Administrative Tools;
- Select Component Services. The following window is displayed:



- Click on the "+" Next to Component Services. Continue until the following screen is displayed:

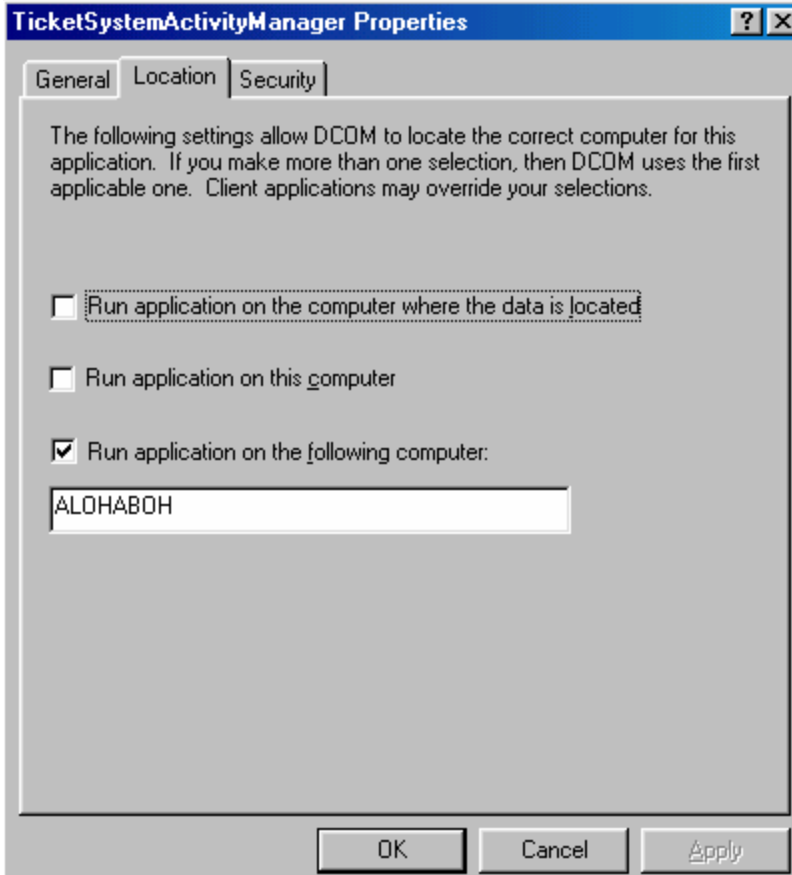


- Scroll Thru the DCOM Config Listing and Locate the TicketSystemActivityManger (hi-lited above).
- Right Click on the TicketSystemActivityManager Icon and select properties.
- Proceed to the DCOM Configuration Step (below).

**DCOM Configuration:**

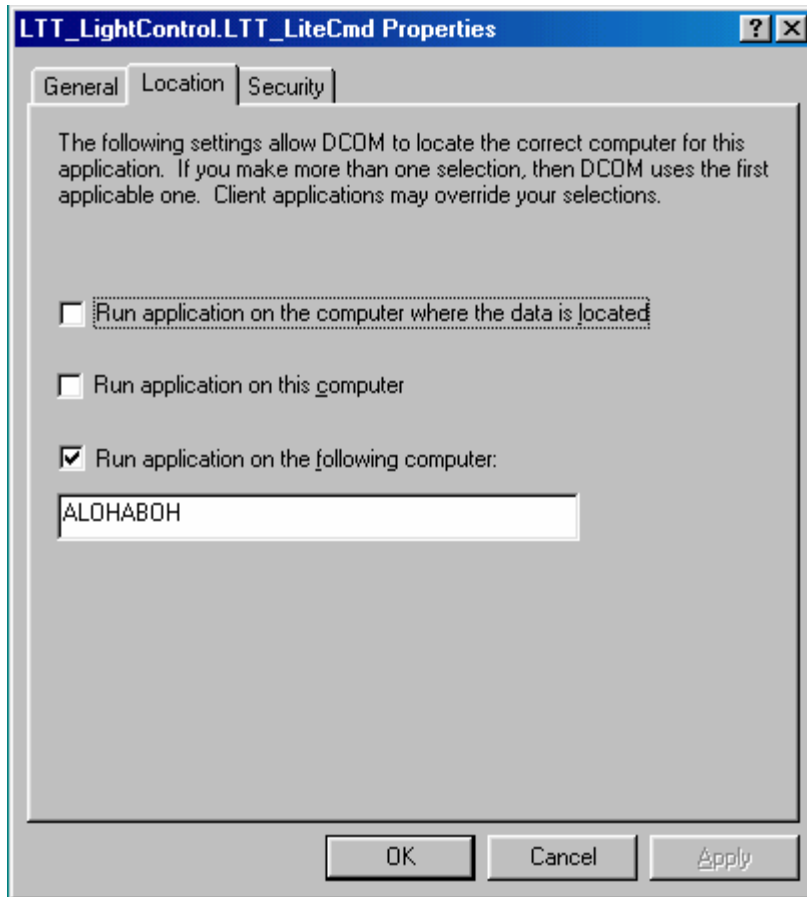
- Select the Location Tab.
- UN-CHECK the "Run Application on this Computer" check box
- CHECK the "Run Application on the following computer check box
- In the field, enter the Back of House Server name, such as ALOHABOH.

Upon Completion the window should look like this:



- Select the APPLICATIONS Tab.
- If using Light Control, locate the "LTT\_LightControl.LTT\_LiteCmd" line and double click it.
- Select the Location Tab.
- UN-CHECK the "Run Application on this Computer" check box
- CHECK the "Run Application on the following computer check box
- In the field, enter the Back of House Server name, such as ALOHABOH.

Upon Completion the window should look like this:



### ***1.3 Reboot the FOH Computer***