

Rental System for Aloha®

Back of House Server Setup

Version 1.8
March 17th, 2006

Copyright 2002-2006, Lone Tree Technology, Inc.

Website: www.LoneTreeTechnology.com

Email: Info@LoneTreeTechnology.com

Aloha, Table Service, and Quick Service are registered trademarks of Radiant Systems, Inc

Overview

This document explains how to setup the Rental System for Aloha on the Aloha Back of House Server (running ctlsvr.exe) running either Table Service (5.2 or higher) or Quick Service (any version).

Section 1 Covers General Installation Instructions. Section 2 Covers Table Service Integration. Section 3 Covers Quick Service Integration.

Please Complete the SERVER installation before performing the CLIENT installations.

Table of Contents

1	GENERAL INSTALLATION INSTRUCTIONS.....	3
1.1	RUN THE RENTAL SYSTEM FOR ALOHA SERVER SETUP PROGRAM.....	3
1.2	RUN DCOMCNFG (SERVER)	3
1.3	ACTIVATE ALOHA FOH COM & FOH INTERCEPT	7
1.4	CREATE ALOHA MENU ITEMS.....	8
2	TABLE SERVICE® SETUP (VERSION 5.2.7 AND HIGHER)	9
2.1	CREATE POOL TABLE SUB MENU.....	9
2.2	SETUP THE TSBUTTON.CFG FILE.....	9
2.3	REFRESH ALOHA AND REBOOT THE COMPUTER.....	10
2.4	REFRESH ALL TERMINALS.....	10
3	QUICK SERVICE® SETUP (VERSION 5.2.7 AND HIGHER)	11
3.1	CREATE POOL TABLE FUNCTION BUTTONS.....	11
3.1.1	<i>CHECK STATUS SETUP.....</i>	<i>11</i>
3.2	REFRESH ALL TERMINALS.....	11

1 General Installation Instructions

1.1 Run the Rental System for Aloha Server Setup program

The Rental System is designed to run as a client server system, with client components running on each aloha terminal, and the server component running a separate system, typically the back of house server.

On the CD, locate and run the program: **Rental System For Aloha Server.exe**

Follow the prompts, selecting the default settings.

The installation program will take several minutes to complete the installation process.

Note: The installation program will start 2 MS-DOS command boxes to perform certain processes.

- Depending on the operating system, these boxes may remain open after these processes complete.
- Allow these processes to complete. On some operating systems, the boxes will close automatically upon completion.
- If the boxes remain open, you can tell when they have completed when you see the word "Finished" next to the MS-DOS icon.

Be sure to attach the Rental System for Aloha Software Dongle to the back of the Aloha Dongle on the Back of House Server Machine.

Note: The computer will always need to be rebooted for the dongle to be seen by the system.

Be sure to reboot the system after completing the install. Make sure the Dongle is attached prior to reboot.

1.2 Run DCOMCNFG (Server)

NOTE: For All-In-One Installations, DCOM Configuration is NOT required. Proceed to the next installation step.

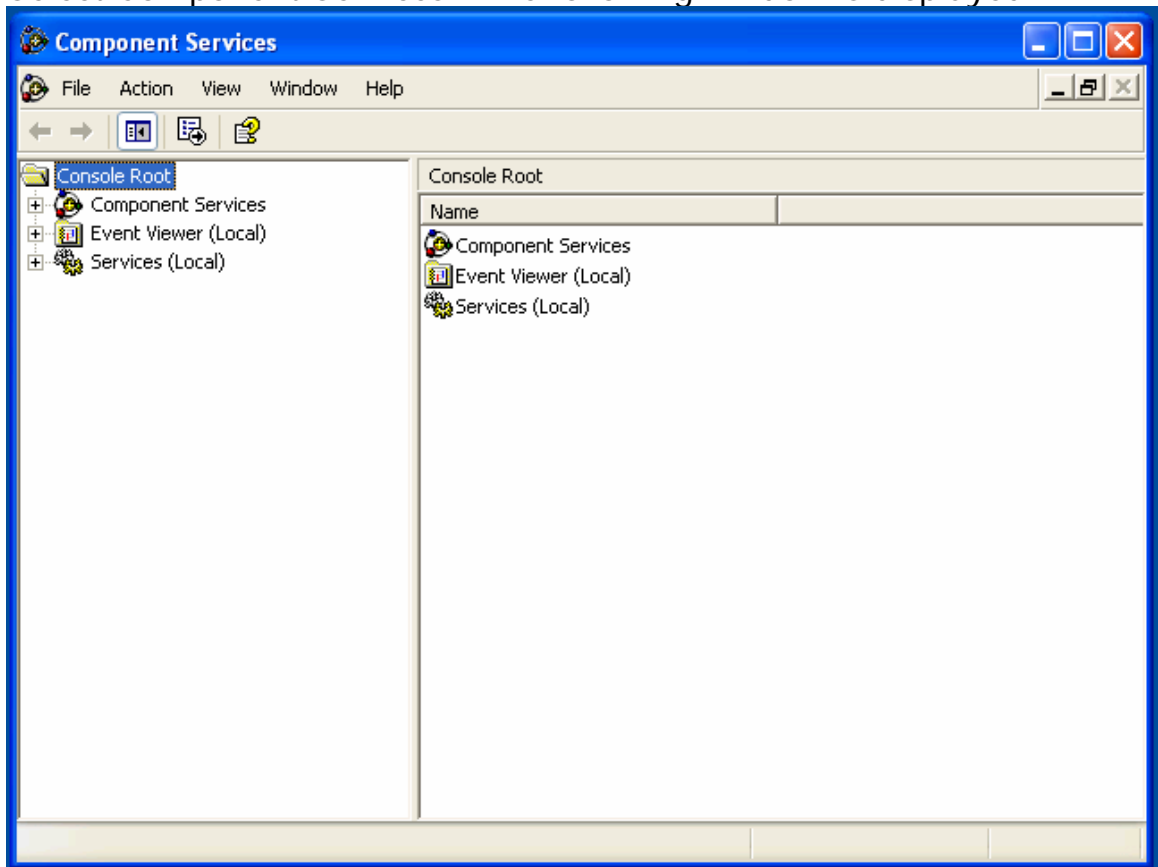
Starting DCOM from Windows 98/2000:

From START, select RUN then enter DCOMCNFG and select OK.

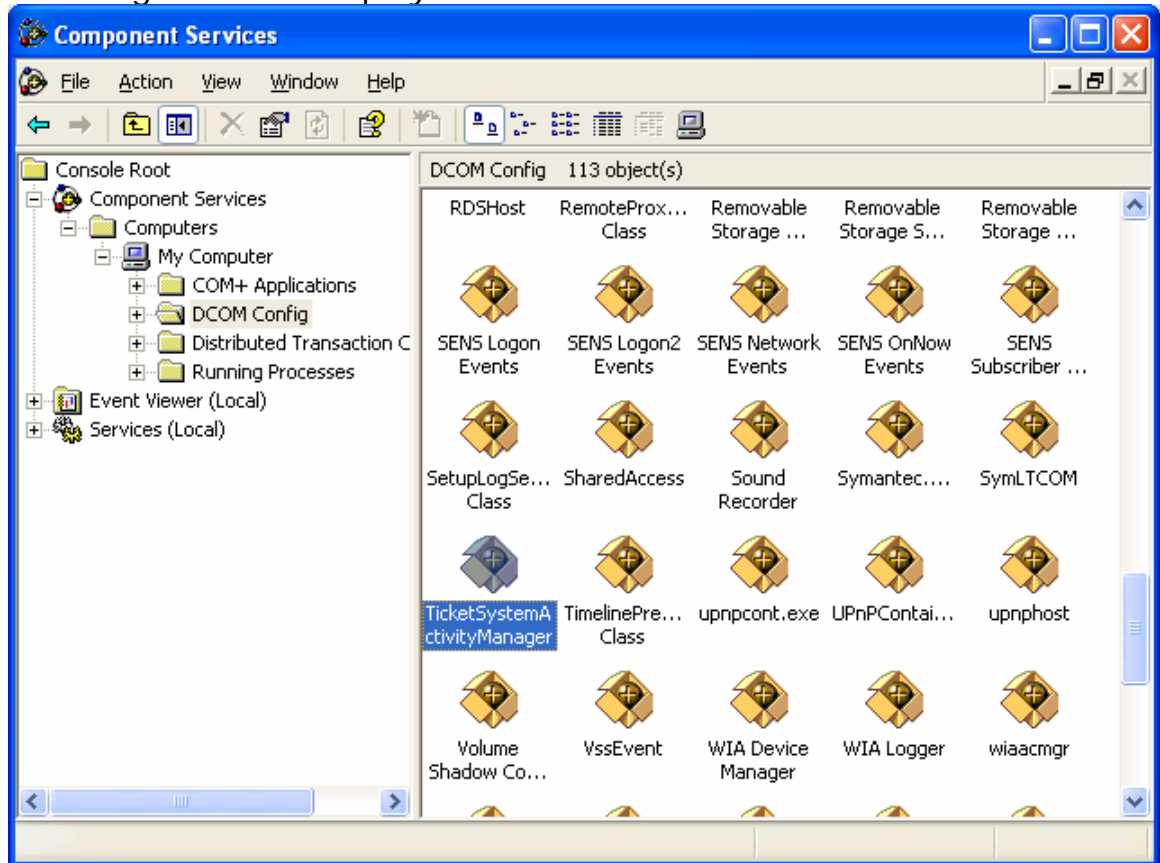
- Select the APPLICATIONS Tab.
- Locate the **“TicketSystemActivityManager”** line and double click it.
- Proceed to the DCOM Configuration Step (below).

Starting DCOM Windows XP:

- Open the Control Panel;
- Select Administrative Tools;
- Select Component Services. The following window is displayed:



- Click on the “+” Next to Component Services. Continue until the following screen is displayed:

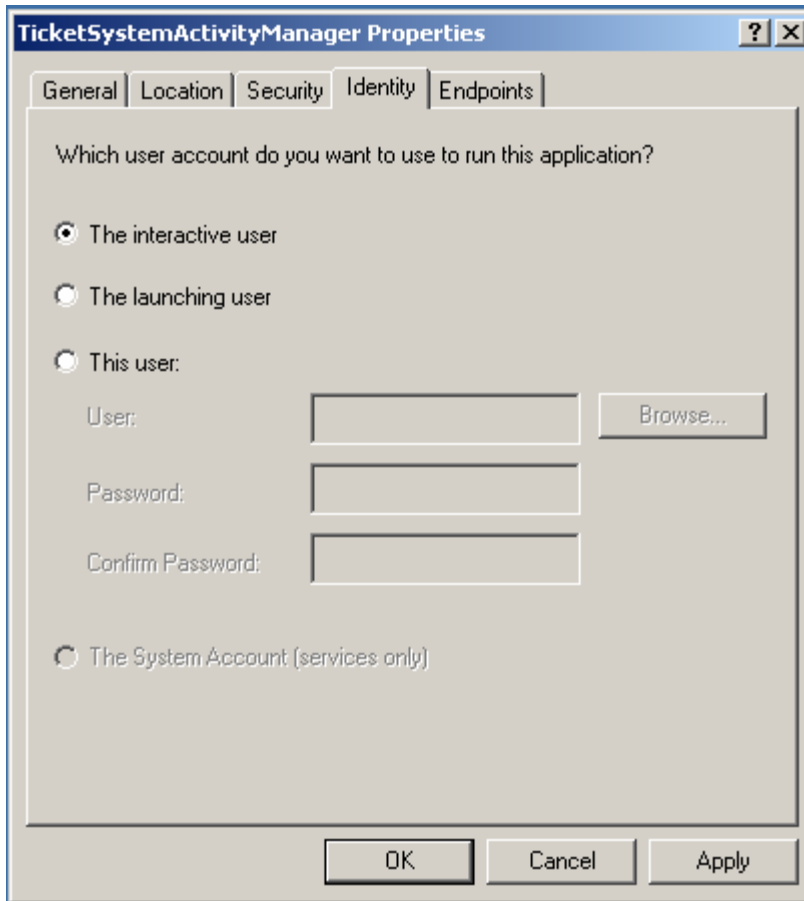


- Scroll Thru the DCOM Config Listing and Locate the TicketSystemActivityManger (hi-lited above).
- Right Click on the TicketSystemActivityManager Icon and select properties.
- Proceed to the DCOM Configuration Step (below).

DCOM Configuration:

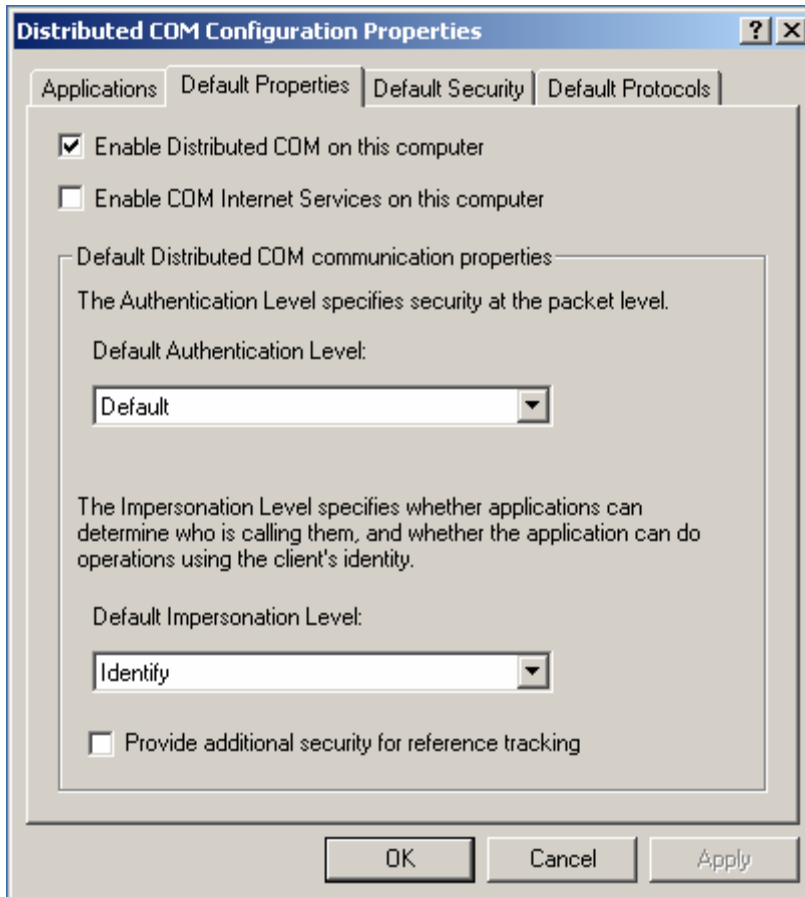
- Select the Identity Tab.
- Click on “THE INTERACTIVE USER”

Upon Completion the window should look like this:



Press OK.

Select the "Default Properties Tab". The window should look like this:

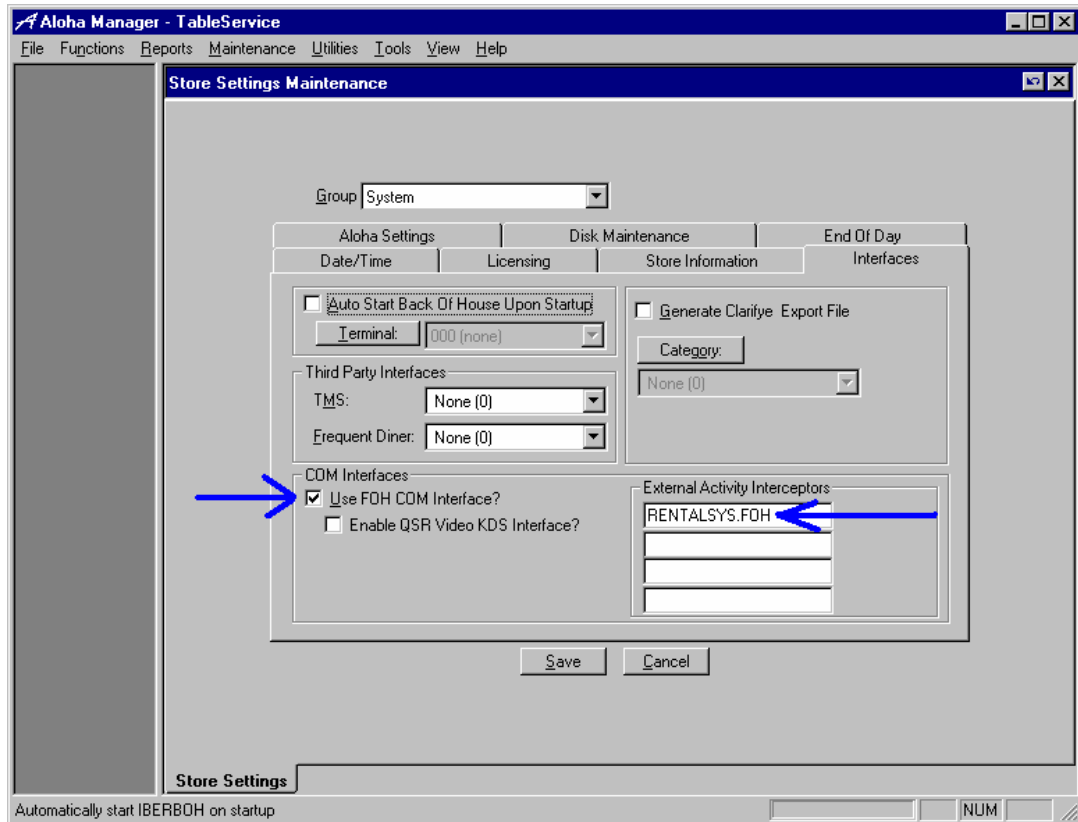


Change settings to match the window if necessary, then select OK to close the window.

1.3 Activate Aloha FOH COM & FOH Intercept

Activate the Aloha FOH COM Interface as shown below. Enable the External Activity Interceptor for the Rental System.

FOH COM may be enabled in Aloha Manager in the Store Settings Maintenance, System Group, Interface Tab, by selecting the "Use FOH COM Interface" flag, as shown below:



In the first available External Activity Interceptor field, enter the following exactly as written: **RENTALSYS.FOH**

Refresh the system after activating FOH COM.

1.4 Create Aloha Menu Items

Using Aloha Manager, Create Aloha Menu Items for use by the pool table rental system.

- One Menu Item must be setup for each fee group being used (if desired, all fee groups can use the same menu item. When shipped, the system is configured to use **items 9001 – 9006** for various fee groups. An example is shown below.
- **Item 9001 (Pool Sys Msg) configuration:**
 - Set Price to 0.
 - Set Never Print on Chit
 - Set Do Not Show When Item
 - **Set Ask for Description**

2 Table Service® Setup (Version 5.2.7 and Higher)

2.1 Create Pool Table Sub Menu

- Using Aloha Manager, Create a Submenu for all pool playing functions, using sub menu ID 998 if available (corresponds to sample TSButton.cfg file).
- For the demo, you must use a new menu ID or a menu with NO buttons assigned.
- Record the Submenu ID (if not 998) for use with the TSButton.cfg file.
- **Do not setup any buttons on the submenu at this time.** This will be done using the TSButton.cfg file.
- Include the Submenu on all appropriate menus, for example Hostess Menu, Server Menu, Bar Tender Menu, etc.

2.2 Setup the TSButton.cfg file.

You need to perform this step only if you did not use submenu 998 in the previous step, or if Aloha is not installed on the C: drive on the FOH TERMINALS.

If you cannot use submenu ID 998, then the TSButton.cfg file (see AKBID1185) must be modified to use the desired submenu number.

An example TSButton.cfg file is provided that uses sub menu ID 998.

A sample TSButton.cfg file looks like this: .

```
1,998,1,STATUS OF\nPOOL TABLES,C:\LTT\Bin\RentalSystemLauncher.exe,1
```

In this example, if sub-menu 998 is available, buttons 1 of the submenu will launch the Pool Table Rental system.

If you cannot use submenu 998, then change the 998 value in the TSButton.cfg file to the desired value, and save the file in the DATA and NEWDATA directories.

If Aloha is not installed on the "C" drive on your FOH terminals, you will need to change the drive parameter in TSButton.CFG. For example, if Aloha is installed on the E: drive, change the line in TSButton.CFG to be:

```
1,998,1,STATUS OF\nPOOL TABLES,E:\LTT\Bin\RentalSystemLauncher.exe,1
```

2.3 Refresh Aloha and Reboot the Computer

Perform an Aloha Refresh and Reboot System.

2.4 Refresh All Terminals

Run the AlohaMgr refresh and test your menu/button setups. Check Fees and Program operation at each terminal

3 Quick Service® Setup (Version 5.2.7 and Higher)

3.1 Create Pool Table Function Buttons

Using the Aloha Manager panel editor, create buttons to enable the Pool Table user interface to be activated.

Use the RUN APPLICATION feature to call the program.

3.1.1 CHECK STATUS SETUP

The Check Status program allows the user to check the status of all Pool Tables, plus perform Check In and Check Out functions from a user selectable list.

- Configure the button look and feel as desired. Set the application path as follows:

`C:\LTT\Bin\RentalSystemLauncher.exe`

- Check the PASS PARAMETERS box.

3.2 Refresh All Terminals

Run the AlohaMgr refresh and test your menu/button setups. Check Fees and Program operation at each terminal